



Installation Instructions

Yamaha - The Drive

2 Passenger Enclosure

Hardware Included:

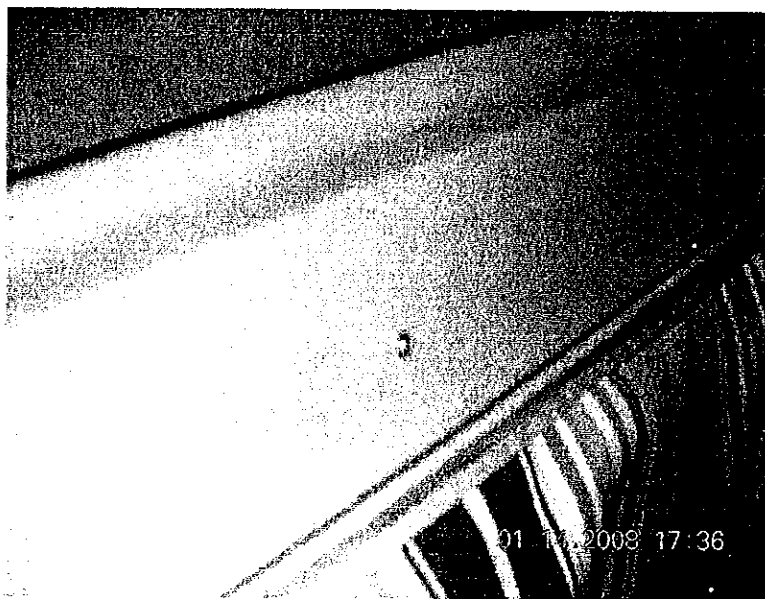
- (2) 52" Aluminum Side Rails (notched at back end)
- (1) 42" Aluminum Straight Back Rail (both ends notched)
- (2) (1) 35" Aluminum Club Protector Rail



SIDE CURTAIN RAIL:

The notched section of the 52" aluminum side rails are to be positioned to the rear of the top. The front of the rail should be approximately $\frac{1}{2}$ " from the front frame post holding the windshield. The "C" opening should be facing "outward and downward."

Mount one 52" aluminum side rail on either side of the car roof by drilling $\frac{1}{8}$ " diameter holes thru the rail and roof. Use $\frac{1}{8}$ " pop rivets and put approximately 4 rivets in each side.



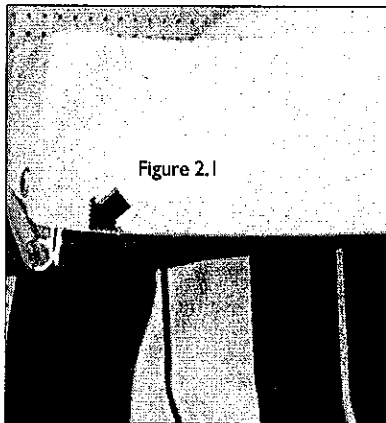


Figure 2.1

STRAIGHT BACK:

Mount the 35" aluminum rail across the back of the roof. We suggest using pop rivets. This rail will mount flat or horizontally, and the "C" will be facing downward and towards the front of the car. (Figure 2.1)

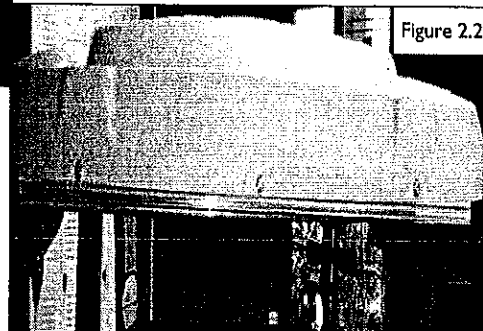


Figure 2.2



STRAIGHT/FULL BACK:

If your enclosure came with *two backs*, (a straight back and a full back) you will have received (2) 35" aluminum rails. If you have received these, they will mount the same as previously mentioned, but with one rail lying on top of another rail, and each "C" facing down. One "C" will be facing the front of the car and the other "C" will be facing the rear of the car.



At this point, your track style enclosure should be installed. Please keep in mind that there is not one specific way to install the enclosure, so please feel free to mount the enclosure where you feel it best fits and works for the customer. If there are any further questions, please do not hesitate to call us at (800) 365-1559. Thank you for purchasing a Tampa g enclosure!